



**PROTECTING BEAUTY  
DRIVING SUSTAINABILITY**





François Luscan – President & CEO, Albéa

## **OUR MISSION**

---

**PROTECTING BEAUTY**

## **OUR COMMITMENT**

---

**MANUFACTURING  
100% RESPONSIBLE PACKAGING BY 2025**

## **OUR SENSE OF PURPOSE**

---

**THERE IS NO RESPONSIBLE PACKAGING  
WITHOUT A RESPONSIBLE COMPANY**

## **OUR CONVICTION**

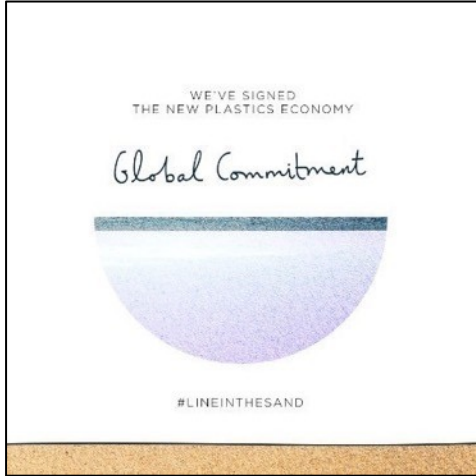
---

**WE WILL ACHIEVE CHANGE  
THROUGH COLLECTIVE ACTION**



# Driving change. Leading the way.

## Commitment and Performance



First beauty packaging supplier to commit to the New Plastics Economy



In Top 3% of companies in plastic products manufacturing



Rated B vs average industry performance at C

# Albéa: A clear vision of responsibility

## Defining tomorrow's packaging



Our **Product Safety Policy** is supported by controls from raw material to final product and is embedded in our New Product Development process.

Albéa has initiated the **Cosmetic Packaging Taskforce** with Elipso\* and Cosmetics Europe\*\* to define how to assess the safety of cosmetic packaging.



Albéa has been using a proprietary version of **eDEA** for its **Life Cycle Assessments (LCA)** for 15 years, with more than **100** LCA measures done every year.

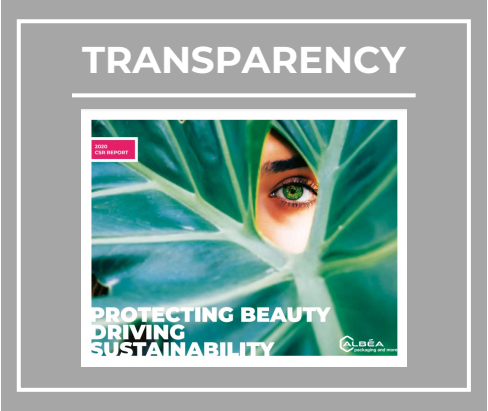
Albéa joined the Ellen Mac Arthur Foundation's New Plastics Economy Global Commitment in October 2018, alongside Johnson&Johnson, L'Oréal, Unilever, Nestlé, Coca Cola, Pepsi and many of our customers and competitors.

This commits us to making 100% of our packaging recyclable, reusable or compostable, and to using 10 % of recycled plastic by 2025



# 100% Responsible Packaging

## Key Success Factors



# Acting for positive impact

## Together

### WE SUPPORT YOUR BRANDS' POSITIONING

We invent responsible packaging solutions for you

We co-develop responsible packaging solutions with you

### WE CONTRIBUTE TO YOUR COMPANY'S SUSTAINABLE COMMITMENTS

We report our CSR performance in full transparency

We involve our stakeholders in the definition  
of our CSR strategy

### WE ARE A TRUSTWORTHY, RELIABLE BUSINESS PARTNER

We are demonstrating agility and resilience  
throughout the current crisis

We adapt constantly to market shifts and trends

### WE HELP UPHOLD YOUR REPUTATION AND REDUCE YOUR RISKS

We make no compromise on business fundamentals

We understand the meaning of License to Operate

# THANK YOU!



**FOLLOW US**

[www.albea-group.com](http://www.albea-group.com)

